

Easthaus



— Offers in excess of £475,000



— Upper Floor Apartment



— 2 Bedrooms



— 2 Bathrooms



— Circa 775 sqft

Wager Street, Bow, London, E3

This 2 bedroom apartment of generous proportions is offered with a long lease of over 200 years and far reaching views of The City skyline. Located on the 5th floor of the development with a large private balcony and allocated parking.



Easthaus



Comprising open plan living and entertaining space, the contemporary kitchen benefits from integrated appliances, and there is a patio door leading on to a large private south facing balcony which attracts great natural light and sunshine throughout the year. Two double bedrooms with an ensuite in the primary, and a further contemporary family bathroom.

Area

Located on the borders of Bow and Mile End, the apartment is within walking distance of a number of East London's renowned green spaces and waterways, including Mile End Park & Leisure Centre, Tower Hamlets Cemetery Park, Limehouse Cut and Regent's Canal. Mile End also has a burgeoning community of independent shops, restaurants and cafes centered around Burdett Road and Mile End Road, and The Queen Elizabeth Olympic Park and Westfield Stratford Shopping Centre are also easily accessible.

Some Easthaus area favourites include:

The Morgan Arms - Charming corner pub with great Sunday roasts

The Lord Tredegar - Offering great food and a sun filled beer garden

East London Liquor Company - Micro distillery with some of the best negroni's around

Mae and Harvey - Brunch and coffee hotspot, best followed by an easy stroll into Victoria Park

Mahdis Plants and Flowers - A little gem of succulents, plants and flowers on Burdett Road



Details

Tenure: Leasehold circa 237 years remaining

Service Charges: Circa £3,870pa including reserve funds. Additional service charge for parking space. Ground Rent: £250pa plus £50pa for parking space ground rent.

Local Council: Tower Hamlets

Council Tax Band: D

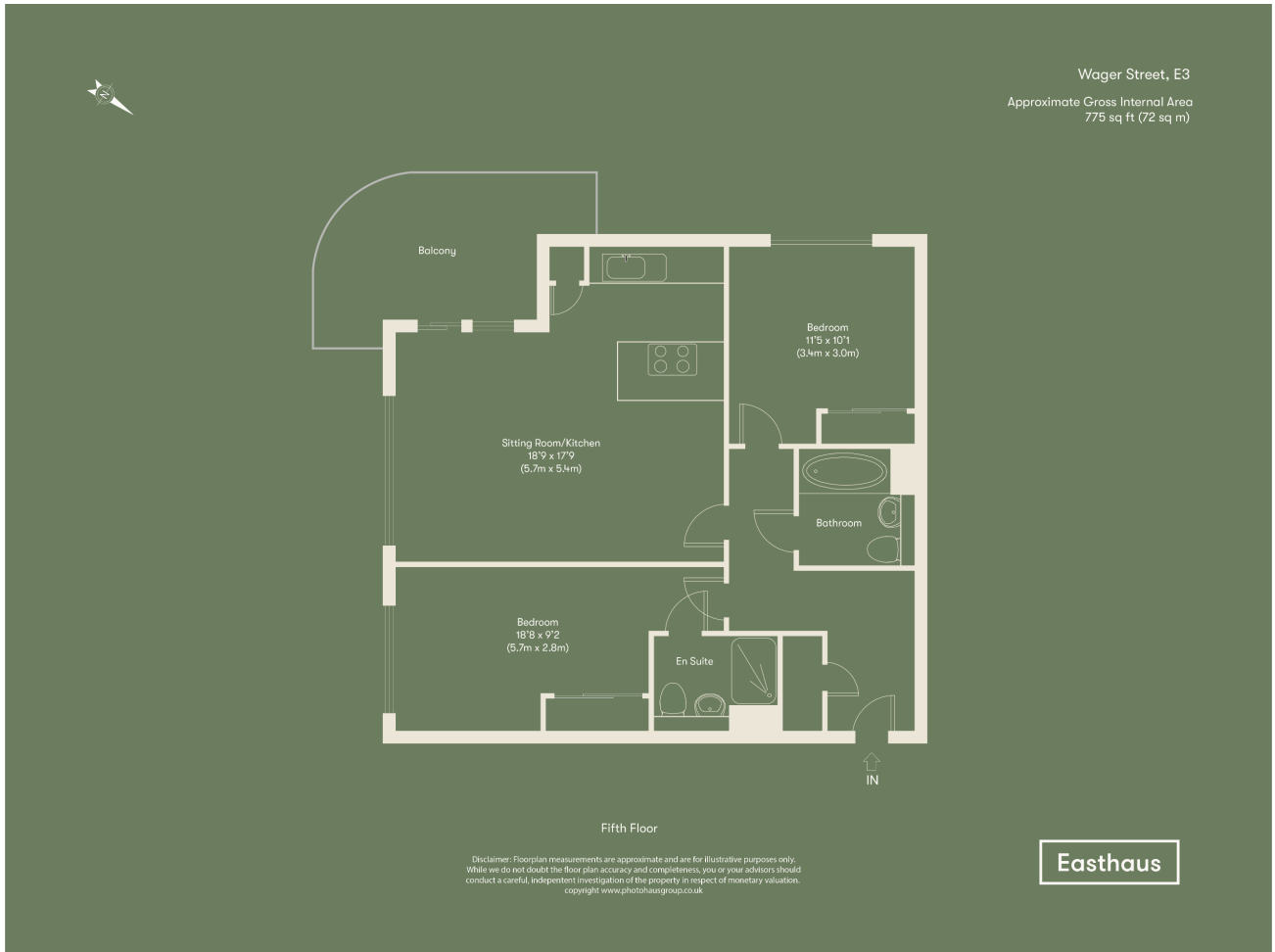
EPC rating: B



Easthaus



Easthaus



Important notice:

1. Particulars: These particulars are not an offer or contract, nor part of one. You should not rely on statements by Easthaus Limited in the particulars or by word of mouth or in writing ("information") as being factually accurate about the property, its condition or its value. Neither Easthaus Limited nor any joint agent has any authority to make any representations about the property, and accordingly any information given is entirely without responsibility on the part of the agent(s), seller(s) or lessor(s). 2. Photos and floorplans: The photographs show only certain parts of the property as they appeared at the time they were taken. Areas, measurements and distances given are approximate only. 3. Regulations, etc.: Any reference to alterations to, or use of, any part of the property does not mean that any necessary planning, building regulations or other consent has been obtained. A buyer or lessee must find out by inspection or in other ways that these matters have been properly dealt with and that all information is correct. 4. VAT: The VAT position relating to the property may change without notice. 5. Particulars dated 13th January 2025. EastHaus Limited is registered in England with registered number 10275389. Our registered office is The Oast, New Road, East Malling, Kent, ME19 6BJ.

